



# CITY OF STOCKTON

---

## PUBLIC WORKS DEPARTMENT

22 East Weber Avenue, Room 301 • Stockton, CA 95202-2317 • 209 / 937-8411 • Fax 209 / 937-8277  
www.stocktonca.gov

### LETTER OF CLARIFICATION NO. 6

#### NEW CITY HALL RENOVATIONS & RELOCATION PROJECT

#### PROJECT NO. E016015

TO ALL PROSPECTIVE BIDDERS

DATE: February 28, 2022

Letter of Clarification No. 6 for the above project consists of the following:

1. This acknowledgement form (see important notice at the end of this form).
2. Requests for clarification shall be submitted by 2:00 p.m. on Thursday, February 24, 2022. If a request warrants a letter of clarification and sufficient time exists to prepare one, such letter of clarification will be posted on Bid Flash at least two days prior to bid opening.

#### SPECIFICATIONS

1. Section 01 60 00 Product Requirements – **Add** paragraph 2.03E as follows:  
“E. In the event a product or material specified has been discontinued and is not warehoused or otherwise available in sufficient quantity to complete the work, the Contractor shall include in their bid and cost of the project a product or material meeting the same or similar functionality as the discontinued product, subject to approval as a substitution request.
2. Section 03 30 00 Cast-in-Place Concrete – **Remove** and **Replace** section 2.06A with the following:  
“A. Epoxy Bonding System:
  1. Complying with ASTM C881/C881M and of Type required for specific application.
  2. Manufacturers:
    - a. *Basis of Design: Master Builders Solutions, MasterEmaco ADH 326: www.master-builders-solutions.com.*

- b. Adhesives Technology Corporation: [www.atcepoxy.com/#sle](http://www.atcepoxy.com/#sle).
    - c. Euclid Chemical Company; DURAL FAST SET  
LV: [www.euclidchemical.com/#sle](http://www.euclidchemical.com/#sle).
    - d. Substitutions: See Section 01 60 00 - Product Requirements.
  3. *Composition: Two-component 100% solids liquid epoxy bonding adhesive.*
  4. *VOC Content: 0 g/L less water and exempt solvents.*
3. Section 08 14 16 Flush Wood Doors – **Revise** paragraph 2.04F-1 as follows: “1. Color: ~~Soft off-white with an Eggshell finish, unless otherwise color as selected by Architect~~”.
4. Section 06 41 00- Architectural Wood Casework – Revise section 2.02 as follows:
  - A. **Remove** and **Replace** paragraph 2.02C-3 with the following:

“3. Basis of Design Manufacturer: Omega National Products.” Cherry product not available through Surfacing Solution).
  - B. **Remove** and **Replace** paragraph D with the following:

“D. Hardwood Caps and Trim:

    1. Profile and dimensions as shown on drawings.
    2. Material: Hardwood lumber.
    3. Finish: see section 2.03 E.”
5. Section 09 51 00 Acoustic Ceilings – **Replace** paragraph 1.03A with “A. 2019 California Building Code – Minimum Design Loads and Criteria for Buildings.”
6. Section 12 32 00 Manufactured Wood Casework – **Revise** Section 2.01A, paragraph 1 as follows:
  - “1. Basis of Design: Marshall Furniture, Inc.: [www.marshallfurniture.com](http://www.marshallfurniture.com). Model No. MELC-35ADA custom with Ellipse Style and custom finishes.
  - A. Contact: Joyce Nemenyi, 847-499-2701, [joyce@marshallfurniture.com](mailto:joyce@marshallfurniture.com).”
7. Section 32 31 19 Decorative Metal Fences – Revise section as follows:
  - C. **Revise** paragraph 2.03D: “Nominal height: Match existing fencing height ~~and panel spacing.~~”

- D. **Revise** paragraph 2.03E. Fence Panels: Fusion welded; 7 feet high by 10 feet long maximum. Field verify and match existing fence height and post spacing.
- E. **Revise** paragraph 2.04C: “~~Final~~ Tops for pickets – Pressed pointed Quad Flair with Ball to match existing.
- 8. Section 27 53 19 Distributed Antenna System – **Replace** “EWU” with “City of Stockton” in paragraph 1.01A.

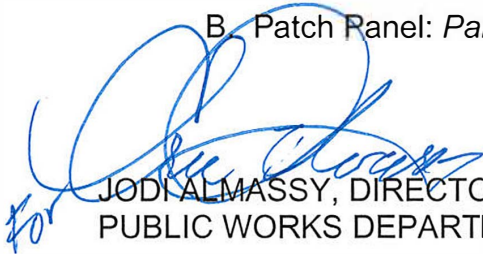
## PLANS

- 1. Sheet C-102 Utility Demolition Plan – **Add** General Note 5 as follows:
  - “5. EXISTING UTILITIES ARE PRESUMED TO HAVE A CEMENT-ASBESTOS COMPOSITION PER SECTION 4.3 OF THE ENVIRONMENTAL REPORT, CONTRACTOR SHALL REMOVE AND DISPOSE OF EXISTING CEMENT-ASBESTOS PIPE IN ACCORDANCE WITH REGULATORY GUIDELINES AND TAKE ALL NECESSARY PRECAUTIONS DURING DEMOLITION OF UTILITY CONDUITS AND PIPES.”
- 2. Sheets AD1-101 through AD1-105 and AD2-10B through AD2-105 Demolition Floor Plans – Make the following changes:
  - A. **Remove** “CONCRESSIVE” and **Replace** with “EPOXY BONDING ADHESIVE, SEE SPEC. SECTION 03 30 00”. Also see Specification Item 2 under this LOC for revisions to section 03 30 00.
  - B. **Add** General Note 16 as follows: “16. Refer to Appendix D Environmental Survey Report and spec sections 02 08 00, 02 09 00, 02 09 10 for hazardous material abatement requirements.”
- 3. Sheet A-001 Schedule and Notes, Casework Schedule – Make the following changes:
  - A. **Replace** “PLAM” with “WOOD VENEER” on key C24 and C44.
  - B. **Add** “SIM.” To Detail Ref. on key C24 and C44.
- 4. Sheets A-510 through A-517 Standard Gyp Bd. Ceiling Details & Sheets A-518 through A-524 Standard Suspended Tile Ceiling Details – Make the following changes:
  - A. **Replace** all references to “ASTM C840-11” with “ASTM C840”.
  - B. **Replace** all references to “ASTM C11-10a” with “ASTM C11”.
  - C. **Replace** all references to “ASTM C1002-07” with “ASTM C1002-18”.
  - D. **Replace** all references to “ASTM A568-11b” with “ASTM A-568-17”.

- E. **Replace** all references to “GRADE 1018 TO 1022” with “GRADE 1018 AND 1002”.
  - F. **Replace** all references to “ASTM A653-11” with “ASTM A653”.
  - G. **Replace** all references to “ASTM C1513-10” with “ASTM C1513-18”.
  - H. **Replace** all references to “ASTM E580-14” with “ASTM E580-17”.
  - I. **Replace** all references to “ASTM C635-13a” with “ASTM C635-13”.
  - J. **Replace** all references to “AISI S100-07/S2-10” with “AISI S100-16”.
  - K. **Replace** all references to “AISC 341-10” with “AISC 341-16”.
  - L. **Remove** “OSHPD” from all Detail Section titles.
  - M. **Replace** “RPD IN RESPONSIBLE CHARGE” with “CONTRACTOR” under Note 2 on detail GX1.32, Sheet A-511.
  - N. **Replace** “RPD” with “CONTRACTOR” under Note 3 on detail CG4.32, Sheet A-514.
  - O. **Replace** “RPD” with “CONTRACTOR” under Note 1 on detail CG6.40, Sheet A-516.
  - P. **Replace** “RPD IN RESPONSIBLE CHARGE” with “CONTRACTOR” under Note 7 on detail CJ0.01, Sheet A-517.
  - Q. **Replace** “OPD” with “THESE NOTES ARE” under Note 6.d on detail CJ0.01, Sheet A-517.
5. I1-101 through I1-105 and I2-10B through I2-105 Finish Plans – Make the following revisions:
- A. **Revise** WV1 *Manuf & Size* to “OMEGA NATIONAL PRODUCTS, PROFILE SW-42-CH-901 OR EQUAL”. Cherry finish not available from Surfacing Solution.
  - B. **Revise** WV2 and WV3 Manuf & Size to “OMEGA NATIONAL PRODUCTS, PROFILE V108-802, OR EQUAL”. Cherry finish not available from Surfacing Solution.
  - C. **Delete** *Contact* line from WV1, WV2, and WV3. Cherry finish not available from Surfacing Solution.
6. Sheets IF1-101 through IF1-105 and IF2-10B through IF2-105, Furnishing Plans – **Add** “U.O.N.” to end of (N) FURNITURE note description in Furniture Legend.
7. Sheet IF1-101 First Floor Furn Plan – Building 1 - **Remove** this sheet in its entirety and **Replace** with the attached sheet of the same name. Changes are

marked by cloud with delta 5. Note added at Fixed Audience Seating to clarify this work as contractor provided, contractor installed.

- 8. Sheet ES-102 Overall Electrical Site Plan Remodel – Electrical - **Remove** this sheet in its entirety and **Replace** with the attached sheet of the same name. Changes are marked by cloud with delta 5. Note 23 revised.
  
- 9. Sheet EET-501 Riser Diagram – **Remove** this sheet in its entirety and **Replace** with the attached sheet of the same name. Changes are marked by cloud with delta 5. Boiler Room 1-602 added to Riser Diagram and Numbered Note 11 revised.
  
- 10. Sheets AV-302 and AV-307 Audio Visual Single Lines – **Add** model numbers for Network Switch and Network Patch Panels as follows:
  - A. Network Switch: *Netgear GSM4328PA M300-28G-POE+*.
  - B. Patch Panel: *Panduit NK6PPG24Y CAT6 keystone 24-port patch*.

  
for JODI ALMASSY, DIRECTOR  
PUBLIC WORKS DEPARTMENT

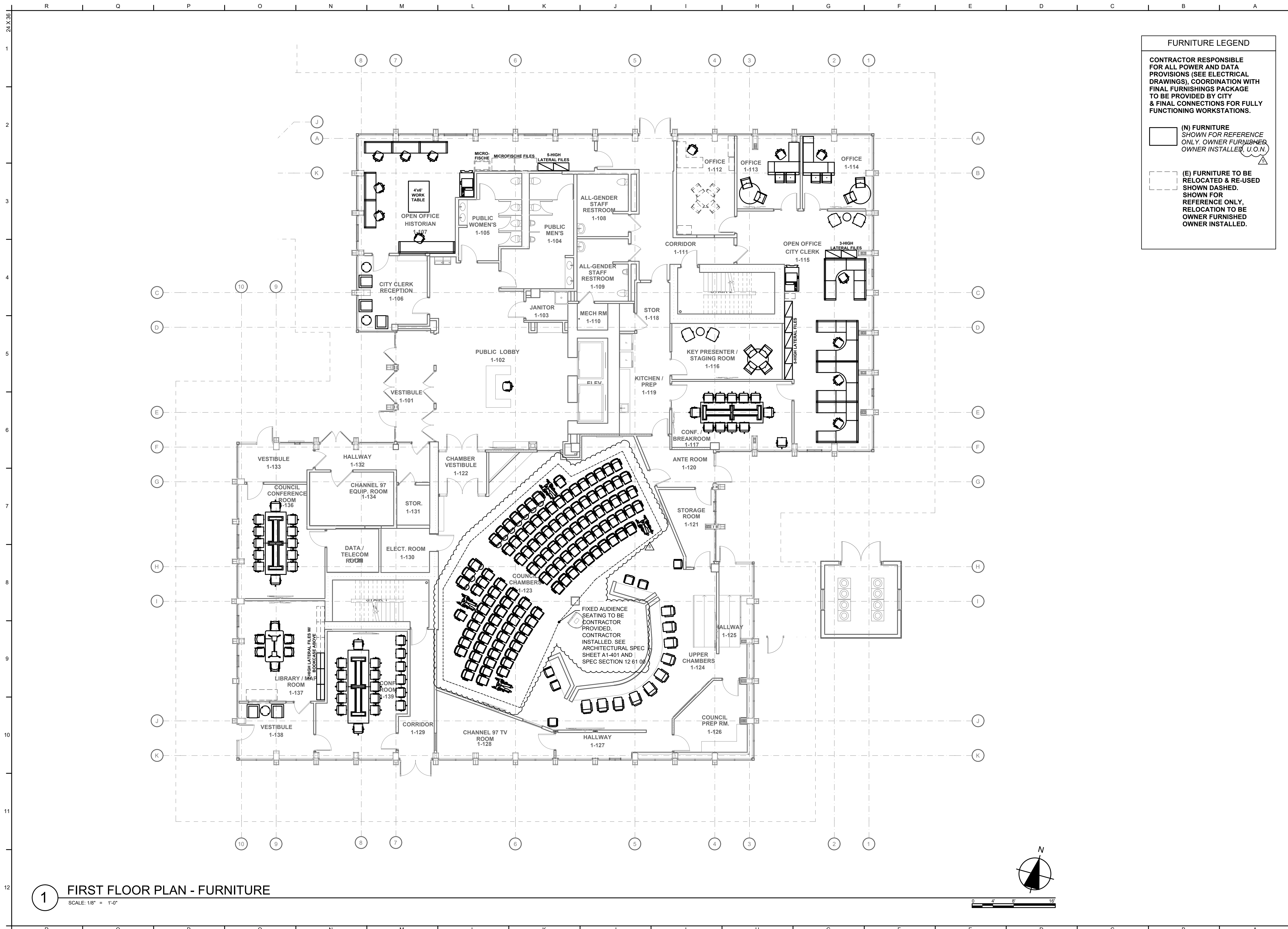
JA:EA:WJ:JC:JL:dc

**NOTICE: THIS FORM MUST BE SIGNED AND RETURNED WITH YOUR BID. FAILURE TO SO INCLUDE OR ACKNOWLEDGE A CLARIFICATION MAY RESULT IN THE BID BEING REJECTED AS NOT RESPONSIVE.**

CONTRACTOR: \_\_\_\_\_

BIDDER SIGNATURE: \_\_\_\_\_

DATE: \_\_\_\_\_



**FURNITURE LEGEND**

CONTRACTOR RESPONSIBLE FOR ALL POWER AND DATA PROVISIONS (SEE ELECTRICAL DRAWINGS), COORDINATION WITH FINAL FURNISHINGS PACKAGE TO BE PROVIDED BY CITY & FINAL CONNECTIONS FOR FULLY FUNCTIONING WORKSTATIONS.

(N) FURNITURE SHOWN FOR REFERENCE ONLY. OWNER FURNISHES. OWNER INSTALLED. U.O.N.

(E) FURNITURE TO BE RELOCATED & RE-USED SHOWN DASHED. SHOWN FOR REFERENCE ONLY. RELOCATION TO BE OWNER FURNISHED. OWNER INSTALLED.

**1 FIRST FLOOR PLAN - FURNITURE**  
SCALE: 1/8" = 1'-0"

Architect  
**indigo**  
**HAMMOND+PLAYLE**  
ARCHITECTS, LLP  
art, architecture + ecology  
909 FIFTH STREET, DAVIS, CA  
530.750.0756 WWW.INDIGARCH.COM

Consultant  
30 YEARS AND COUNTING  
**designTECH**  
INTERIOR DESIGN SERVICES, INC.  
3325 ELVAS AVENUE  
SACRAMENTO, CA 95834  
916.432.2889  
WWW.DESIGNTECH-DES.COM

CALIFORNIA COUNCIL FOR  
**CCIDC**  
K. Magagnoli  
KRISTEN MAGAGNOLI  
CERTIFIED INTERIOR DESIGNER  
EXPIRES 07/09/22 CID# 6699

Agency Approvals

City Approvals  
**Public Works Department**  
Approved by \_\_\_\_\_  
Date \_\_\_\_\_  
City Engineer, Stockton, CA \_\_\_\_\_

Issue: 100% CONSTRUCTION DOCUMENTS

No.	Date	Description
1	02/28/22	LOC No. 6

Project  
**NEW CITY HALL RENOVATIONS & RELOCATION PROJECT**  
501 & 509 West Weber Ave.  
Stockton, CA 95203

Architect of Record: BP  
Project Architect: \_\_\_\_\_  
Drafted By: \_\_\_\_\_  
Checked By: \_\_\_\_\_  
File Date: 12/15/21  
Project Number: E016015

Sheet Title  
**FIRST FLOOR FURN PLAN - BUILDING 1**

Sheet Number  
**IF1-101**  
Sheet 220 of 476  
**5471C.219**

### GENERAL NOTE ON CORING OF SLABS AND WALLS:

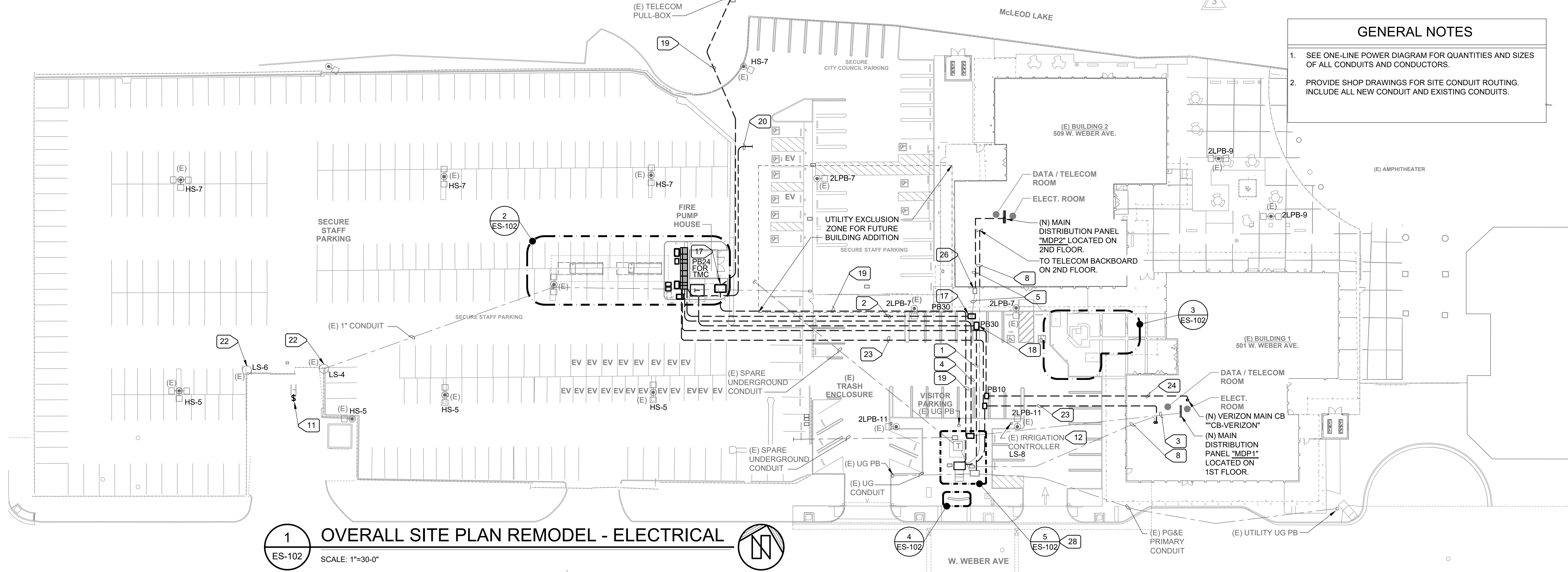
WHEREVER POSSIBLE, CONTRACTOR MUST FIRST REUSE EXISTING PENETRATIONS IN THE REINFORCED CONCRETE FLOOR SLABS AND WALLS FOR ANY PIPING, CONDUIT, DUCTWORK, ETC. WHERE NEW PENETRATIONS ARE UNAVOIDABLY REQUIRED IN THE BUILDING, AND NOT SHOWN IN THE STRUCTURAL DRAWINGS, OBTAIN WRITTEN APPROVAL BY STRUCTURAL ENGINEER AND ARCHITECT. APPROVAL WILL REQUIRE THE NEW PENETRATION BE XRAYED PER REQUIREMENTS DESCRIBED ON STRUCTURAL DRAWINGS.

### NUMBERED NOTES

- PROVIDE NEW PG&E PRIMARY SERVICE CONDUITS. FROM THE (E) PG&E PRIMARY PULLBOX TO THE NEW PG&E TRANSFORMER. PROVIDE NEW CONDUITS WITH PULL ROPES PER PG&E REQUIREMENTS.
- NEW UNDERGROUND FEEDER CONDUIT TO INTERCEPT (E) FEEDER CONDUITS TO "MDP2". PULL IN NEW FEEDER CONDUCTORS FROM "MSB" TO "MDP2".
- PROVIDE AND PULL NEW CONDUCTORS TO BUILDING 1 NEW MAIN DISTRIBUTION PANEL "MDP1" THROUGH EXISTING CONDUITS.
- NEW UNDERGROUND FEEDER CONDUIT TO INTERCEPT (E) FEEDER CONDUITS TO "MDP1". PULL IN NEW FEEDER CONDUCTORS FROM "MSB" TO "MDP1".
- PROVIDE AND PULL NEW CONDUCTORS TO BUILDING 2 THROUGH EXISTING CONDUITS TO THE BASEMENT. PROVIDE NEW CONDUITS AND SPLICE BOX WITH SEAL AT THE WALL IN BASEMENT INTERIOR AND ROUTE 1200A FEEDERS TO NEW DISTRIBUTION PANEL "MDP2" LOCATED ON THE SECOND FLOOR.
- MAINTAIN CEC WORKING CLEARANCE IN FRONT OF NEW MAIN SWITCHBOARD.
- FUTURE CEC WORKING CLEARANCE AROUND FUTURE EQUIPMENT.
- PROVIDE PATHWAYS FOR UTILITY FIBER & COPPER FOR AT&T DATA/TELECOM SERVICE THROUGH EXISTING & NEW CONDUITS. VERIFY ALL REQUIREMENTS WITH AT&T PRIOR TO COMMENCEMENT OF WORK. SEE AT&T REQUIREMENTS IN THE EET DRAWING SERIES.
- PROVIDE CONDUIT WITH PULL WIRE TO PULL BOX FOR FUTURE PEDESTAL TO POWER FUTURE EV CHARGERS. CONDUIT SIZE INDICATED ON PLANS.
- PROVIDE BATTERY CHARGER CIRCUIT AND HEATER CIRCUIT FOR FIRE PUMP MOTOR.
- PROVIDE A FIRE DEPARTMENT KNOX SWITCH AND CONNECT TO GATE CONTROLLER.
- LOCATE AND INTERCEPT EXISTING IRRIGATION CONTROLLER CIRCUIT AND EXTEND TO INDICATED CIRCUIT.
- IDENTIFY EXISTING UNDERGROUND PULL BOX AND EXTEND TO NEW LIGHTING AND KIOSK SIGN CONDUIT AND CONDUCTORS.
- LOCATE LUMINAIRES 2FT FROM BASE OF FLAG POLE. AIM LUMINAIRE AT TOP OF THE FLAG POLE.
- ARRAY LUMINAIRES PARALLEL TO CURVATURE OF MONUMENT SIGN AT 1FT DISTANCE FROM FROM NT. POINT LUMINAIRES TOWARDS MONUMENT SIGN.
- LOCATE AND INTERCEPT EXISTING MOTORIZED GATE CIRCUIT AND RE-ROUTE TO NEW PANEL "LS" IN "MSB2". PROVIDE TRAFFIC RATED PULL-BOX. SEE DETAIL "4/E-705".
- PROVIDE NEW TRAFFIC RATED PULL-BOX. SEE DETAIL "4/E-705".
- PROVIDE NEW TRAFFIC RATED PRIMARY PULL-BOX PER PG&E REQUIREMENTS.
- PROVIDE NEW 3" C.O. FOR TRAFFIC CONTROL.
- PROVIDE NEW (2) 2"C.O. STUBBED UNDERGROUND FOR FUTURE EV CHARGING STATION. PROVIDE PAVEMENT MARKER AT STUB LOCATION.
- PROVIDE (11) 2" C.O., STUBBED OUT TO LIMIT OF WORK FOR FUTURE EV CHARGING STATIONS.
- (E) MOTORIZED GATE. RE-USE (E) FEEDER AND CONNECT TO INDICATED CIRCUIT.
- PROVIDE (2) 2" TELECOM CONDUIT TO BUILDING 1 TELECOM ROOM. PROVIDE FIBER AND FIBER-TO-ETHERNET CONVERTER. FIBER PER ETHERNET CONVERTER MANUFACTURER'S REQUIREMENTS.
- PROVIDE FEEDER FOR VERIZON EQUIPMENT. SEE ONE-LINE POWER DIAGRAM FOR FEEDER SIZE.
- LOCATE AND INTERCEPT EXISTING SITE LIGHTING CIRCUIT AND EXTEND TO NEW PANEL "HS" IN "MSB2". PROVIDE TRAFFIC RATED PULL BOX. SEE DETAIL "1/E-708".
- PROVIDE STAINLESS STEEL TAMPER RESISTANT TORX SECURITY HOLD-DOWN BOLTS, CLIPS AND NUTS.
- VERIFY ALL REQUIREMENTS WITH PG&E PRIOR TO BID.
- HAND DIG OR VACUUM EXCAVATE WHEN DIGGING WITHIN 2 FT OF UTILITY LINES AFTER U.S.A. HAS IDENTIFIED EXISTING LINES.
- COORDINATE POSSIBLE REMOVAL WITH PG&E PRIOR TO BID.
- TO UGPB "PB24" FOR TMC BY (N) SWBD "MSB". SEE NUMBERED NOTE 19 FOR CONDUIT SIZE.
- PROVIDE NEW (2) 3"C.O. SPARES FOR FUTURE PV SYSTEM CONNECTION. PROVIDE PAVEMENT MARKER AT STUB LOCATION.
- PROVIDE NEW (2) 2"C.O. SPARES FOR FUTURE USE. PROVIDE PAVEMENT MARKER AT STUB LOCATION.

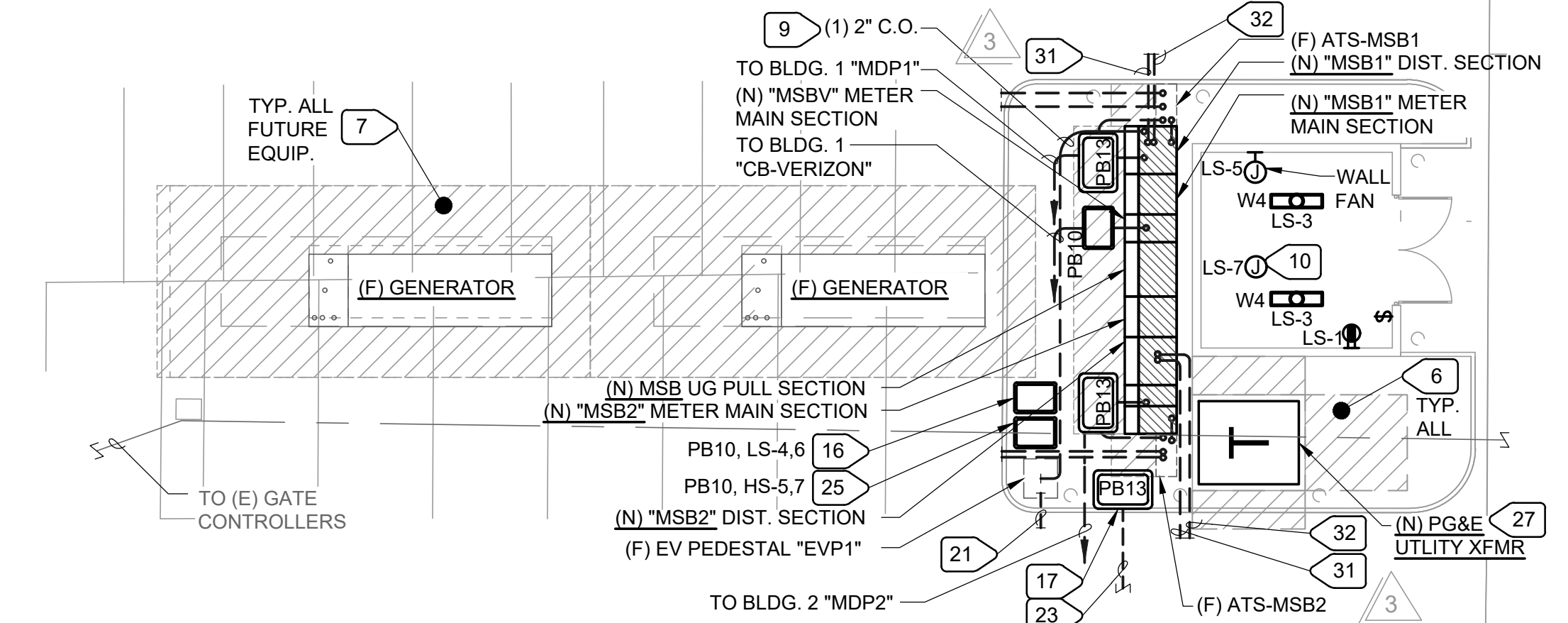
### GENERAL NOTES

- SEE ONE-LINE POWER DIAGRAM FOR QUANTITIES AND SIZES OF ALL CONDUITS AND CONDUCTORS.
- PROVIDE SHOP DRAWINGS FOR SITE CONDUIT ROUTING. INCLUDE ALL NEW CONDUIT AND EXISTING CONDUITS.



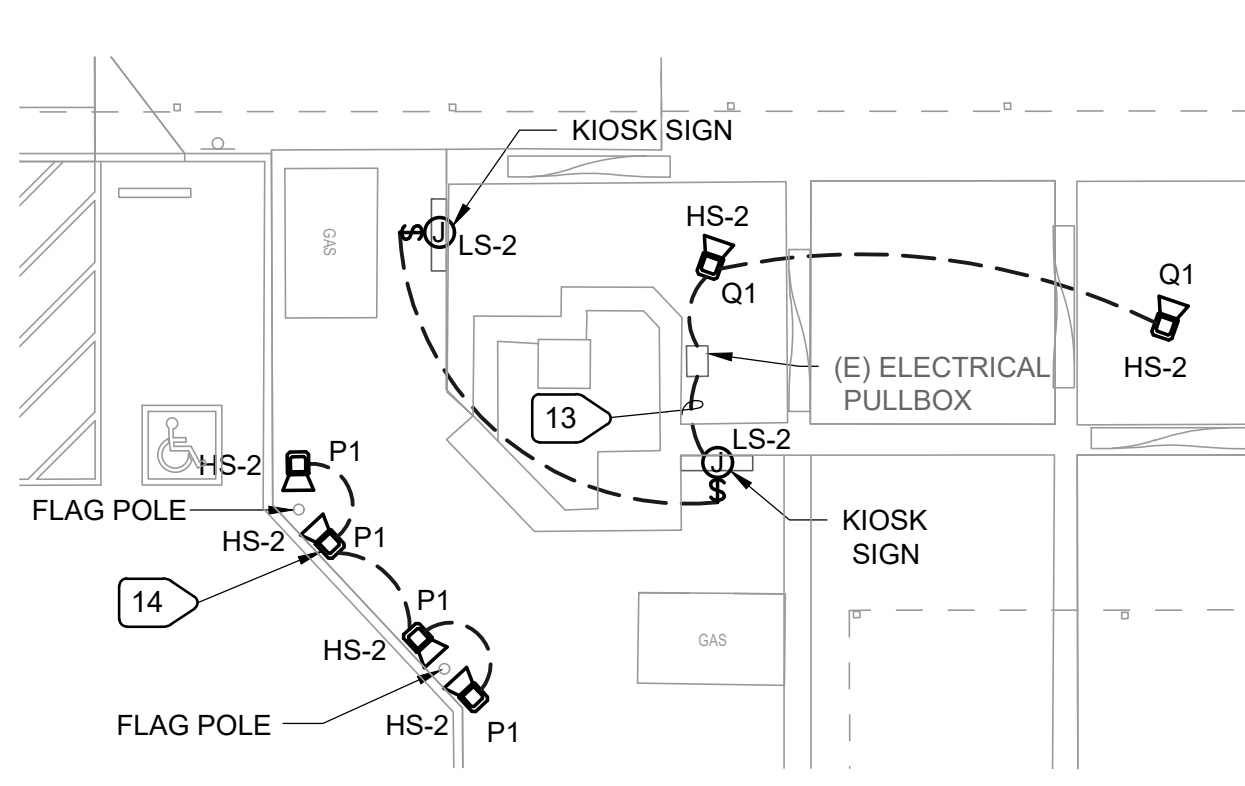
### 1 OVERALL SITE PLAN REMODEL - ELECTRICAL

ES-102 SCALE: 1"=30'-0"



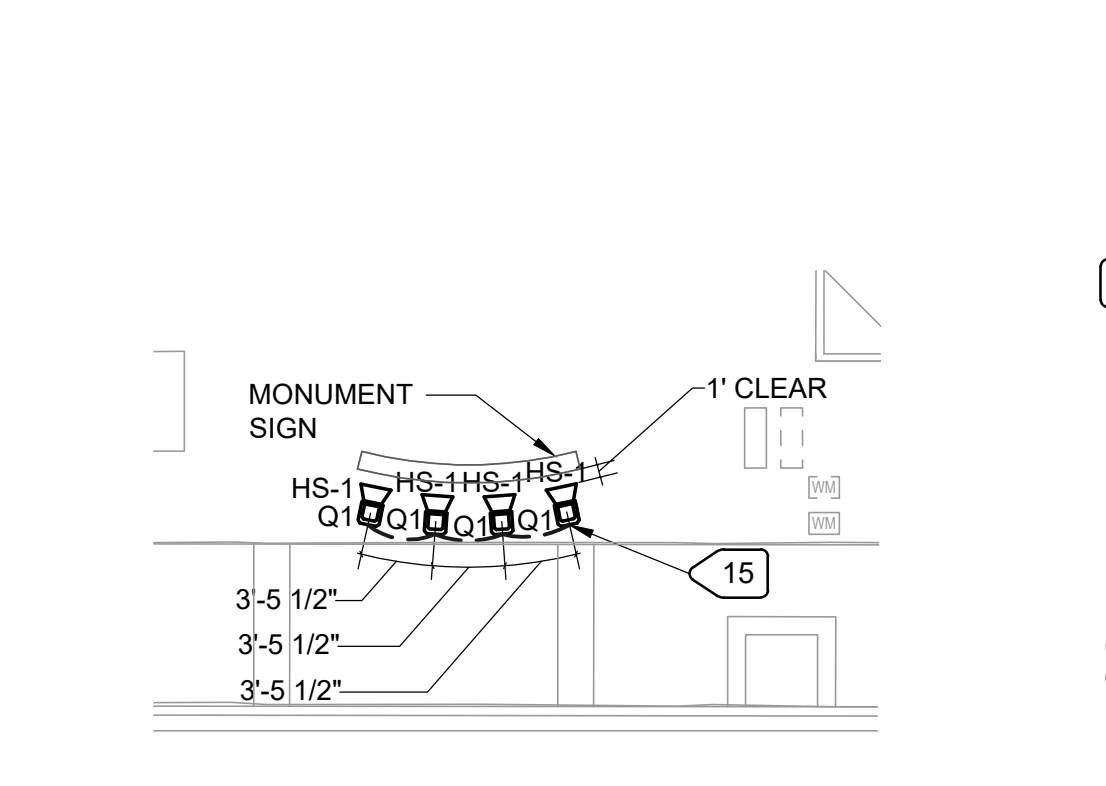
### 2 ENLARGED ELECTRICAL YARD

ES-102 SCALE: 3/32" = 1'-0"



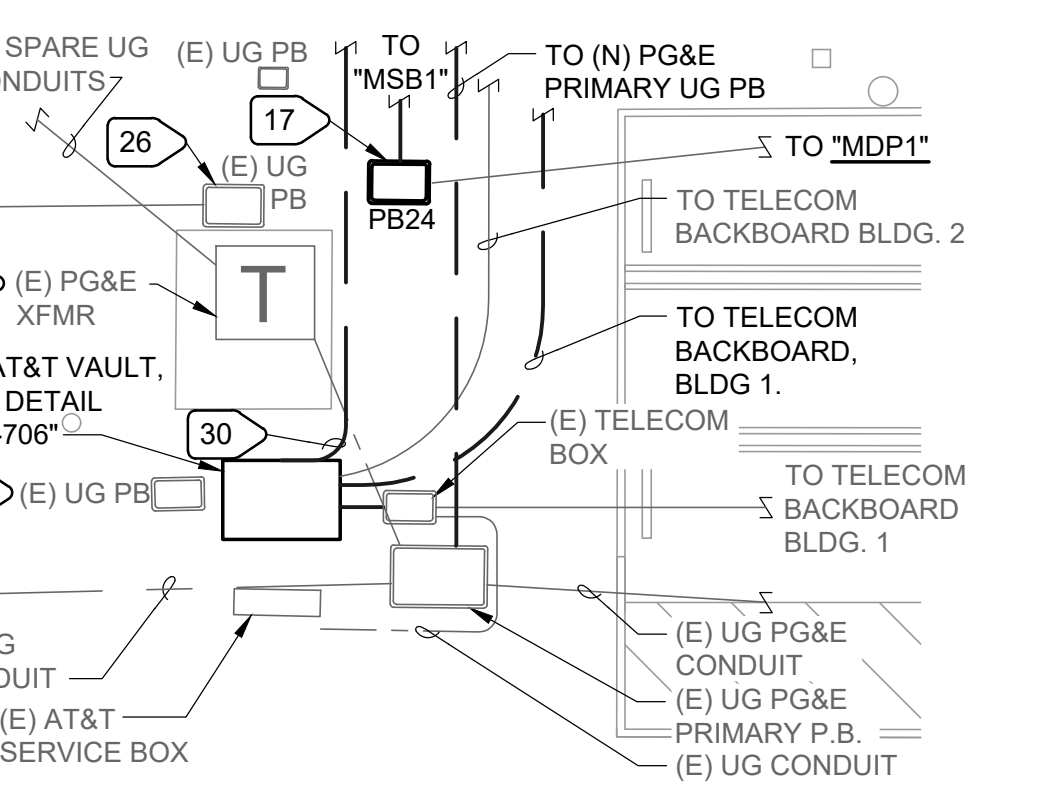
### 3 ENLARGED ELECTRICAL AND LIGHTING - ENTRANCE

ES-102 SCALE: 3/32" = 1'-0"



### 4 ENLARGED LIGHTING - MONUMENT SIGN

ES-102 SCALE: 3/32" = 1'-0"



### 5 ENLARGED ELECTRICAL YARD

ES-102 SCALE: 3/32" = 1'-0"

Architect  
**indigo**  
**HAMMOND+PLAYLE**  
 ARCHITECTS, LLP  
 art, architecture + ecology  
 909 FIFTH STREET, DAVIS, CA  
 530.750.0756 WWW.INDIGODARCH.COM

Consultant  
**M. NIELS**  
**ENGINEERING, INC.**  
 Electrical Engineers | Lighting Designers  
 100 Howe Ave., Suite 235N  
 Sacramento, CA 95825-9217  
 www.mnielsenengineering.com  
 Tel: (916) 923-4400 Fax: (916) 923-4410  
 PROJECT #: 18337.21

REG-STRIP PROFESSIONAL ENGINEER  
 ELEC. U.S.A. STATE OF CALIFORNIA  
 No. E20229  
 Exp. 03-31-23  
*Jose Baptista*  
 02-25-22

Agency Approvals

City Approvals  
**Public Works Department**  
 Approved by \_\_\_\_\_  
 Date \_\_\_\_\_  
 City Engineer, Stockton, CA

Issue: 100% CONSTRUCTION DOCUMENTS

No.	Date	Description
▲	02-01-22	LOC No. 4
▲	02-28-22	LOC No. 6

Project  
**NEW CITY HALL RENOVATIONS & RELOCATION PROJECT**  
 501 & 509 West Weber Ave.  
 Stockton, CA 95203

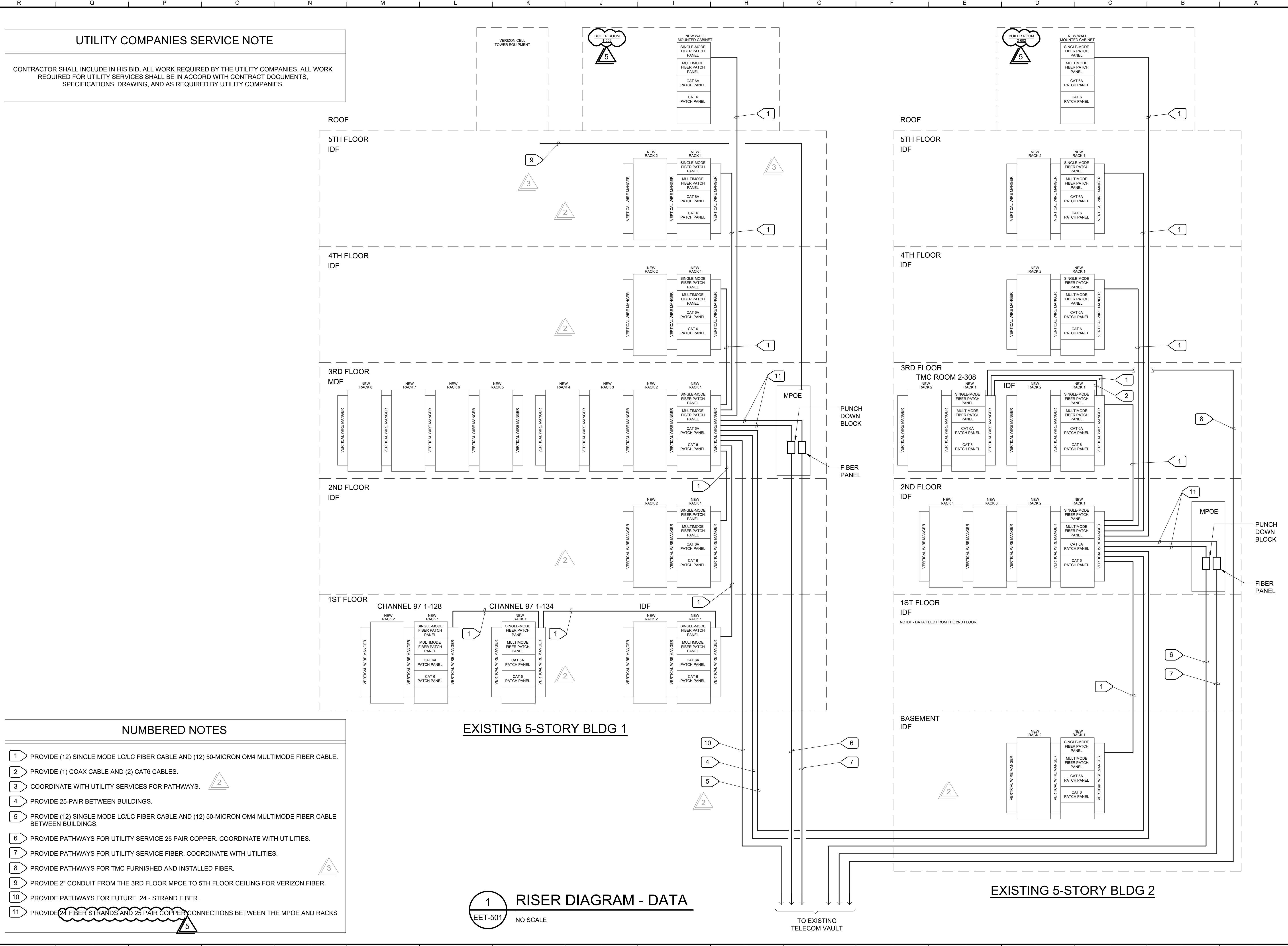
Architect of Record: BP  
 Project Architect: \_\_\_\_\_  
 Drafted By: \_\_\_\_\_  
 Checked By: \_\_\_\_\_  
 File Date: 12/15/21 Project Number: E016015

Sheet Title  
**OVERALL SITE PLAN REMODEL - ELECTRICAL**

Sheet Number  
**ES-102**  
 Sheet 333 of 476  
**5471C.332**

UNAUTHORIZED CHANGES & USES: M. Neils Engineering, Inc. preparing these plans will not be responsible for, or liable for unauthorized changes to or uses to these plans. All changes to these plans must be in writing and must be approved by M. Neils Engineering, Inc. Feb 25, 2022 - 6:05pm, / jropp

Feb 25, 2022 - 3:02pm, / jcropp  
UNAUTHORIZED CHANGES & USES: M. Neils Engineering, Inc. preparing these plans will not be responsible for, or liable for unauthorized changes to or uses to these plans. All changes to these plans must be in writing and must be approved by M. Neils Engineering, Inc.



**UTILITY COMPANIES SERVICE NOTE**

CONTRACTOR SHALL INCLUDE IN HIS BID, ALL WORK REQUIRED BY THE UTILITY COMPANIES. ALL WORK REQUIRED FOR UTILITY SERVICES SHALL BE IN ACCORD WITH CONTRACT DOCUMENTS, SPECIFICATIONS, DRAWING, AND AS REQUIRED BY UTILITY COMPANIES.

- NUMBERED NOTES**
- 1 PROVIDE (12) SINGLE MODE LC/LC FIBER CABLE AND (12) 50-MICRON OM4 MULTIMODE FIBER CABLE.
  - 2 PROVIDE (1) COAX CABLE AND (2) CAT6 CABLES.
  - 3 COORDINATE WITH UTILITY SERVICES FOR PATHWAYS.
  - 4 PROVIDE 25-PAIR BETWEEN BUILDINGS.
  - 5 PROVIDE (12) SINGLE MODE LC/LC FIBER CABLE AND (12) 50-MICRON OM4 MULTIMODE FIBER CABLE BETWEEN BUILDINGS.
  - 6 PROVIDE PATHWAYS FOR UTILITY SERVICE 25 PAIR COPPER. COORDINATE WITH UTILITIES.
  - 7 PROVIDE PATHWAYS FOR UTILITY SERVICE FIBER. COORDINATE WITH UTILITIES.
  - 8 PROVIDE PATHWAYS FOR TMC FURNISHED AND INSTALLED FIBER.
  - 9 PROVIDE 2" CONDUIT FROM THE 3RD FLOOR MPOE TO 5TH FLOOR CEILING FOR VERIZON FIBER.
  - 10 PROVIDE PATHWAYS FOR FUTURE 24 - STRAND FIBER.
  - 11 PROVIDE 24 FIBER STRANDS AND 25 PAIR COPPER CONNECTIONS BETWEEN THE MPOE AND RACKS

**EXISTING 5-STORY BLDG 1**

**1 RISER DIAGRAM - DATA**

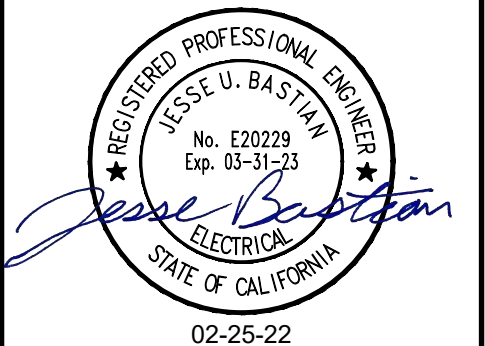
EET-501 NO SCALE

**EXISTING 5-STORY BLDG 2**

TO EXISTING TELECOM VAULT



Consultant  
**M. NEILS ENGINEERING, INC.**  
Electrical Engineers | Lighting Designers  
100 Howe Ave., Suite 235N  
Sacramento, CA 95825-9217  
www.mneilsengineering.com  
Tel: (916) 923-4400 Fax: (916) 923-4410  
PROJECT # 18337.21



Agency Approvals

City Approvals  
**Public Works Department**  
Approved by \_\_\_\_\_  
Date \_\_\_\_\_  
City Engineer, Stockton, CA

Issue: 100% CONSTRUCTION DOCUMENTS

No.	Date	Description
1	01-18-22	LOC No. 2
2	02-01-22	LOC No. 4
3	02-28-22	LOC No. 6

**NEW CITY HALL RENOVATIONS & RELOCATION PROJECT**  
501 & 509 West Weber Ave.  
Stockton, CA 95203

Architect of Record	BP
Project Architect	
Drafted By	
Checked By	
File Date	Project Number
12/15/21	E016015

**RISER DIAGRAM - DATA**

EET-501